



SYSTEMATIC LITERATURE REVIEW ON ACCOMMODATION UNITS IN INTERIOR ARCHITECTURE

İÇ MİMARLIKTA KONAKLAMA BİRİMLERİNE DAİR SİSTEMATİK BİR LİTERATÜR İNCELEMESİ

Yasemin TUZLU EROL¹ ●
Salih SALBACAK² ●



ORCID: Y.T.E. 0009-0001-8693-8395
S.S. 0000-0001-8965-3857

Corresponding author/Sorumlu yazar:

¹ Yasemin Tuzlu Erol
Fatih Sultan Mehmet Vakıf University, Türkiye
E-mail/E-posta: yasemintuzlu@gmail.com

² Salih Salbacak
Fatih Sultan Mehmet Vakıf University, Türkiye
E-mail/E-posta: ssalbacak@fsm.edu.tr

Received/Geliş tarihi: 06.01.2026

Benzerlik Oranı/Similarity Ratio: %9

Revision Requested/Revizyon talebi:
18.02.2026

Last revision received/Son revizyon teslimi:
07.03.2026

Accepted/Kabul tarihi: 27.03.2026

Etik Kurul İzni/ Ethics Committee Permission:
There is no element in the study that requires ethics committee approval. / Çalışmada etik kurul onayı gerektiren bir unsur bulunmamaktadır.

Citation/Atf: Tuzlu Erol, Y. & Salbacak, S. (2026). Systematic Literature Review on Accommodation Units in Interior Architecture. The Turkish Online Journal of Design Art and Communication, 16 (2), 1015-1032. <https://doi.org/10.7456/tojdac.1857363>

Abstract

Accommodation structures have evolved from basic shelter spaces into environments defined by comfort, aesthetics, and experience, increasingly shaped by interior architectural approaches that foster emotional connections with users. Despite this shift, research on the interior architecture of accommodation units remains limited and fragmented. This study conducts a PRISMA-based systematic review of publications indexed in Web of Science (WoS) and SCOPUS to examine existing scholarship in the field. The studies were classified by themes, methods, accommodation types, and spatial focus. Findings indicate that perception, user experience, sustainability, and thematic design dominate the literature, while mixed-method approaches and topics such as accessibility, ecological accommodation, and material usage receive limited attention. Research primarily focuses on hotel buildings and room-scale interiors, with alternative accommodation types underrepresented. The study identifies key trends and research gaps and proposes a framework for future research.

Keywords: Accommodation, Interior Design, Hotel, Hospitality, Literature Review

Öz

Konaklama yapıları, tarihsel süreçte yalnızca barınma ihtiyacını karşılayan mekânlar olmaktan çıkarak konfor, estetik ve deneyim odaklı yapılarla dönüşmüştür. Günümüzde bu dönüşüm, kullanıcıyla duygusal bağ kurmayı amaçlayan iç mimari yaklaşımlarla ele alınmaktadır. Ancak konaklama birimlerinin iç mimarisine odaklanan akademik çalışmaların literatürde sınırlı ve dağınık olduğu görülmektedir. Bu çalışma, Web of Science (WoS) ve SCOPUS veri tabanlarında PRISMA yönergeleri doğrultusunda gerçekleştirilen sistematik literatür taramasıyla konaklama birimlerinin iç mimarisine ilişkin araştırmaları incelemektedir. Çalışmalar temalar, yöntemler, konaklama türleri ve mekânsal odaklar açısından sınıflandırılmıştır. Bulgular, algı ve kullanıcı deneyimi temalarının baskın olduğunu; karma yöntem yaklaşımları ile erişilebilirlik, ekolojik konaklama ve malzeme kullanımı gibi konuların sınırlı ele alındığını göstermektedir. Ayrıca araştırmaların ağırlıklı olarak otel yapıları ve oda ölçeğindeki iç mekânlara odaklandığı belirlenmiştir. Çalışma, literatürdeki eğilimleri ve araştırma boşluklarını ortaya koyarak gelecekteki araştırmalar için kuramsal ve metodolojik bir çerçeve sunmaktadır.

Anahtar Kelimeler: Konaklama, İç mimari, Otel, Literatür Taraması

* This article is derived from the PhD dissertation titled "Interpreting the Interior Architectural Development of the Concept of Accommodation through Urban Hotel Rooms in Istanbul," written by Yasemin Tuzlu Erol and conducted at the Graduate School of Fatih Sultan Mehmet Vakıf University, Department of Interior Architecture, under the supervision of Assoc. Prof. Dr. Salih Salbacak.



INTRODUCTION

Accommodation is a form of spatial experience that has evolved throughout human history in parallel with changing cultural, social, and economic conditions. Over time, accommodation units have gone beyond merely meeting individuals' basic shelter needs and have assumed significant roles as carriers of social life, cultural accumulation, and architectural thought (Rogers, 2001). These structures appear in various forms, such as inns, caravanserais, hotels, and guesthouses. They not only served those who stayed in them but also became spatial grounds for trade, cultural exchange, and social interaction. For this reason, it is possible to interpret the architectural understanding, material technologies, and social practices of historical periods through the organization of interior spaces. Consequently, examining accommodation units from an interior architecture perspective is not limited solely to physical arrangements. It also requires analyzing the relationship established between space and the user, the lived experiences it accommodates, and the traces these experiences leave on the space itself (Lawson, 2001).

In this context, it is important to clarify the disciplinary position of interior architecture in relation to architecture and tourism studies. While architecture focuses on structural and formal elements, and tourism studies concentrate on service quality and consumer behavior, interior architecture centers on the experiential, material-oriented, and spatial organization of interior environments. This discipline argues that interior space is not merely a visual phenomenon, but a holistic environment that engages all the senses and shapes perception and embodied experience (Pallasmaa, 2005, pp. 15–20). At the same time, it examines how space, through its material presence and the atmosphere it generates, can guide human behavior (seduction) and construct a distinctive spatial identity (Zumthor, 2006, pp. 40–42). Therefore, analyzing accommodation units from an interior architectural perspective emphasizes the sensory and atmospheric experience of interior space rather than building typology or hotel management.

Today, accommodation units are evaluated not merely as structures that serve a temporary dwelling function, but as spaces based on integrated design strategies that establish emotional connections with users through service quality, atmosphere, visual identity, and spatial experience (Heide et al., 2007). Lawson (2001) emphasizes that architectural space is not simply a formal shell; rather, our behaviors are influenced and even constrained by these environments (pp. 24–25). Kontic (2018) notes that interior architectural design in accommodation units has emerged as a strategic discipline that shapes user-oriented characteristics, directs spatial perception, and contributes to brand value. This situation is summarized by the statement that hotel interior design constructs customer perception, creates a sense of value, and assigns symbolic meanings to the space.

Accordingly, contemporary accommodation designs are shaped not only by aesthetic and functional considerations, but also by the goal of providing users with a comprehensive spatial experience. In this context, interior architecture plays a significant role as a fundamental discipline that defines the user-oriented qualities of accommodation spaces, guides spatial perception, and simultaneously adds value to brand image (Heide et al., 2007).

Within this framework, it is useful to conceptually differentiate between perception-oriented and aesthetics-oriented approaches to experience. Perception and user experience studies primarily examine sensory stimuli, spatial atmosphere, and embodied interaction, whereas aesthetics-oriented approaches emphasize formal composition, stylistic coherence, and symbolic expression. Although these dimensions intersect in practice, distinguishing them analytically enables a clearer understanding of how experiential and formal strategies operate within interior space (Pallasmaa, 2005, pp.15-40). This conceptual distinction becomes particularly relevant in accommodation environments, where spatial atmosphere and aesthetic articulation jointly shape user experience.

In this context, an examination of the existing academic literature reveals that studies specifically focusing on the interior design of accommodation units are limited in number and fragmented in content. Most research is either addressed within the framework of general architectural approaches or structured according to the priorities of different disciplines such as tourism, marketing, and user experience. The

scarcity of studies that focus on the effects of interior architectural design on spatial experience, the user–space relationship, and the typological development process hinders the structured consolidation of academic knowledge in this field.

Moreover, the insufficient documentation of historical and typological data related to the interior design of accommodation units is considered to hinder both the comparative analysis of existing design approaches and the accurate forecasting of future trends. Interior architectural design, however, should not be evaluated solely on a visual or aesthetic level; it should also be addressed as a strategic component that guides user behavior, enhances functional comfort, and offers solutions integrated with sustainability principles. Indeed, systematic reviews in the international literature indicate that qualitative research on hotel interior design remains quite limited and that the theoretical coherence of the field has not yet been sufficiently established (Sop, 2020, p. 304). As noted by Sop (2020, p. 299), the systematic review method makes existing research visible, enabling both the identification of gaps in the literature and the understanding of future-oriented trends. For theoretical production to develop, it is necessary to create structured comparative frameworks, document historical and typological continuities, and address interior space not only through its formal characteristics but also through its behavioral, cultural, and sustainability-oriented dimensions that shape user experience. For this reason, research on the interior architectural development of accommodation units conducted within an evidence-based and analytically grounded framework supported by systematic reviews enhances conceptual clarity and encourages interdisciplinary interaction (Sop, 2020, p. 299).

In this context, addressing interior architectural studies of accommodation units at an academic level strengthens the theoretical body of knowledge in the field of interior architecture by enabling the creation of organized documentation of the literature and the mapping of historical and typological continuities. This accumulation of knowledge provides a basis for a comprehensive understanding of the field by contributing to the systematic documentation of the literature, the thematic mapping of existing studies, and the formation of comparable data sets. Addressing the existing gap in the literature and examining interior architectural approaches specific to accommodation units within a comprehensive, systematic, and analytical framework thus constitutes an important necessity for both contemporary design practice and academic research.

In this context, the study aims to systematically review the literature focusing on interior architectural design approaches and trends in accommodation units. The analytical mapping of the existing body of literature constitutes the main point of departure for the research.

Accordingly, the priorities of the research can be grouped under four main headings. *First*, the study aims to identify the scope and orientations of the existing academic literature in the field. *Second*, it seeks to determine the prominent themes, theoretical approaches, and patterns of practice related to interior architectural design. *Third*, the research plans to identify areas that have been extensively examined or overlooked in the literature in order to define existing research gaps. *Finally*, the study aims to develop recommendations that will guide future research.

Accordingly, answers will be sought to the following research questions (RQ):

RQ1: What is the current state of academic studies on interior architectural design in accommodation units?

RQ2: What are the recurring interior architectural design themes, approaches, and trends in the literature on accommodation units?

RQ3: Which topics have been extensively examined in interior architectural design research, and which have not been sufficiently addressed?

This study aims both to contribute to academic knowledge production and to serve as a guiding reference for practitioners in interior architectural design decisions. The framework to be established through the systematic literature review method is expected to enable the development of a comprehensive understanding of interior design in accommodation units.

METHOD

This study adopts a qualitative systematic literature review approach to examine scientific publications on accommodation units within the field of interior architecture. The research process is structured into four main stages: *identification*, *selection*, *categorization*, and *synthesis*. The research design illustrating these stages is presented in Figure 1.

According to the research design:

In the identification phase, a comprehensive archival review of national and international literature addressing the relationship between interior architecture and accommodation was conducted. At this stage, the presence, scope, and characteristics of interior architectural approaches related to accommodation units within the literature were identified, and the theoretical background of the subject was outlined through an examination of key concepts, trends, and debates in the field. Through this process, the body of interior architectural literature on accommodation units was defined, and its position and significance within the discipline were established. This phase is essential for both shaping the conceptual framework of the study and determining the boundaries of the research problem.

In the selection phase, the literature selection process was conducted in a systematic and transparent manner based on the PRISMA guidelines. The publications obtained through the screening process were evaluated according to predefined inclusion and exclusion criteria, and only sources that were relevant to the scope of the study and met scientific quality standards were included in the research dataset.

In the categorization phase, the included publications were systematically classified under three main categories: thematic classification, methodological distribution, and accommodation types and spatial focus. Thematic classification aimed to identify the prominent themes addressed in the literature, while methodological distribution examined the use of qualitative, quantitative, and mixed research methods. The category of accommodation types and spatial focus assessed the extent to which different accommodation types were studied and identified the spatial contexts emphasized in the research. This systematic categorization enabled a structured analysis of the literature and supported an in-depth evaluation of research trends and gaps.

In the synthesis phase, the findings were analyzed in relation to recurring themes, overlooked topics, and methodological preferences, and the overall orientation of the literature was mapped. Through this literature mapping process, prominent and neglected research topics, recurring themes, and research gaps, as well as frequently and rarely used research methods were identified.

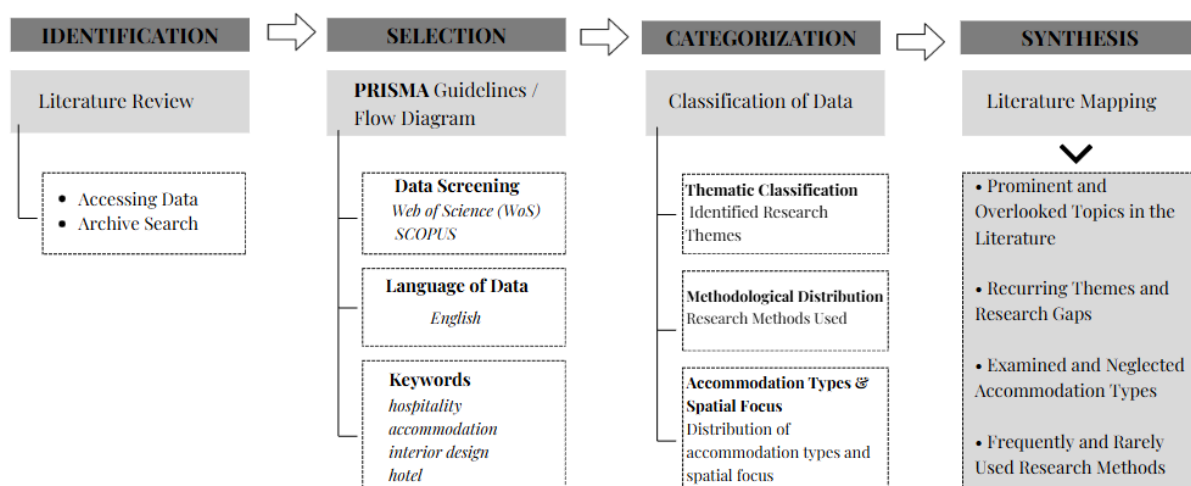


Figure 1. Methodological Framework of the Study

PRISMA Method and Its Theoretical Framework

The PRISMA method provides not only a reporting framework for comprehensive literature reviews but also a strong methodological foundation that guides the research process. Developed in line with the principles of systematicity, transparency, and coherence, this guideline enhances scientific rigor, particularly in multidisciplinary research. The PRISMA statement, originally developed by Moher et al. (2009), was later updated and restructured by Page et al. (2021) with the release of the PRISMA 2020 version.

The contribution of PRISMA extends beyond specifying how data should be reported; it also emphasizes the transparent documentation of why particular studies are included or excluded, thereby enhancing the methodological reliability of the research. Moreover, by ensuring replicability, PRISMA enables other researchers to follow the same procedures and promotes standardization in scientific knowledge production. Indeed, the literature includes several exemplary studies in which PRISMA has been effectively applied to enhance transparency, replicability, and methodological rigor. For instance, systematic reviews employing the PRISMA protocol have been conducted in studies by Yildirim et al. (2023), Meinck et al. (2022), Gonçalves et al. (2023), Jain et al. (2023), Nanu et al. (2024), Lefosse et al. (2023), Rashdan and Ashour (2024), Fleming et al. (2013), Al Khatib et al. (2024), and Deniz and Cavka (2024). These examples demonstrate that PRISMA is not limited to health sciences but is also effectively utilized in fields such as interior architecture, environmental design, and accommodation-related research. Sideri et al. (2018) stated that PRISMA enhances clarity, reproducibility, and quality in systematic reviews, while Liberati et al. (2009) emphasized that PRISMA provides an effective foundation not only for reporting but also for the evaluation of systematic reviews.

Databases and Access to Sources

Within the scope of this study, academic sources were accessed through the Web of Science (WoS) and Scopus databases. These two databases were selected due to their interdisciplinary indexing systems, inclusion of publications with high academic standards, and global recognition. In this way, reliable and scientifically rigorous publications in both interior architecture and accommodation research were obtained.

The search process employed English keywords such as hospitality, accommodation, interior design, and hotel. This approach enabled access to the international academic body of knowledge related to the subject. Furthermore, the literature review was limited to academic publications published in peer-reviewed journals and written exclusively in English.

Data Collection Process and PRISMA Flow Diagram

The literature selection process was conducted in a transparent, systematic, and step-by-step manner in accordance with the PRISMA 2020 guidelines. Accordingly, the inclusion and exclusion criteria are presented in Table 1.

Table 1. Inclusion and Exclusion Criteria

Selection Criterion	Inclusion Criteria	Exclusion Criteria
Topic	Studies focusing on accommodation spaces in interior architecture	Out-of-scope studies focusing solely on tourism, business, or engineering perspectives
Type of Publication	Peer-reviewed journal articles	Books, book chapters, theses, reports, and conference proceedings
Language	English-language articles	Publications in languages other than English
Accessibility	Publications retrieved using the specified search terms (hospitality, accommodation, interior design, hotel) and available in full text.	Studies for which the full text was not accessible



The selection process was carried out in three main stages: identification, screening, and inclusion. *In the identification stage*, a total of 375 records were obtained through systematic searches conducted in the Web of Science (WoS) (n = 242) and Scopus (n = 133) databases. The search strategy was structured using Boolean operators to ensure both conceptual precision and comprehensive retrieval across databases. In both Web of Science (WoS) and Scopus, the accommodation-related terms “hotel,” “accommodation,” and “hospitality” were combined using the OR operator to capture terminological variations within the field. These terms were then linked to the phrase “interior design” using the AND operator to restrict the results to studies situated within an interior architectural context.

In Web of Science, the search was conducted within the Topic field (TS), which includes title, abstract, and keywords, using the following query:

TS= ("interior design") AND (hotel OR accommodation OR hospitality))

The results were refined by limiting the document type to “Article,” selecting English-language publications, and restricting the Web of Science Category to “Architecture” to enhance disciplinary relevance.

In Scopus, the search was performed within the TITLE-ABS-KEY field using the equivalent Boolean structure:

TITLE-ABS-KEY ("interior design") AND (hotel OR accommodation OR hospitality))

Similarly, the results were restricted to English-language journal articles.

The search strategy followed the same conceptual framework across Web of Science and Scopus; however, database-specific indexing structures required minor adaptations in field selection and filtering options. In Web of Science, the Topic (TS) field and the WoS Category filter (Architecture) were applied, whereas in Scopus the TITLE-ABS-KEY field was used to ensure comparable disciplinary focus. These adjustments reflect differences in database classification systems rather than variations in the conceptual scope of the review.

Parentheses were employed to group related terms and ensure logical consistency in the combination of OR and AND operators. The complete search strings and database-specific field definitions are presented in Table 2.

Table 2. Database Search Strategy and Boolean Operators

Database	Search Field	Search String
Web of Science	Topic field (TS: Title, Abstract, Author Keywords, Keywords Plus)	TS= ("interior design") AND (hotel OR accommodation OR hospitality))
Scopus	TITLE-ABS-KEY (Title, Abstract, Author Keywords)	TITLE-ABS-KEY ("interior design") AND (hotel OR accommodation OR hospitality))

After removing duplicate records (n = 64), 311 unique studies remained and were subjected to title and abstract screening.

During the screening stage, all 311 records were evaluated at the title and abstract level, and 188 studies were excluded for not meeting the predefined scope and disciplinary criteria of the review.

Subsequently, 123 reports were sought for full-text retrieval. Of these, 28 reports were not accessible in full text, resulting in 95 studies assessed for eligibility.

Due to variations in database indexing and keyword assignment practices, relevant studies may not always include the exact phrase “interior design” in the title, although they address interior spatial



dimensions within accommodation environments. Therefore, conceptual alignment was further ensured through detailed title–abstract screening and full-text eligibility assessment.

At the full-text stage, studies were excluded if they primarily addressed general architectural form without examining interior spatial design, focused predominantly on tourism management, marketing, or hospitality services without spatial analysis, or presented engineering- or performance-based evaluations lacking relevance to interior architectural experience. In addition, publications that mentioned accommodation spaces only descriptively without analytical or empirical engagement with interior design dimensions were removed to ensure disciplinary and conceptual consistency. At this stage, 61 studies were excluded following full-text assessment.

In the final inclusion stage, after completing all exclusion steps, a total of 34 studies meeting the predefined criteria were included in the review for detailed analysis. These studies constituted the dataset for thematic, methodological, and typological examination. The PRISMA 2020 flow diagram illustrating this process is presented in Figure 2.

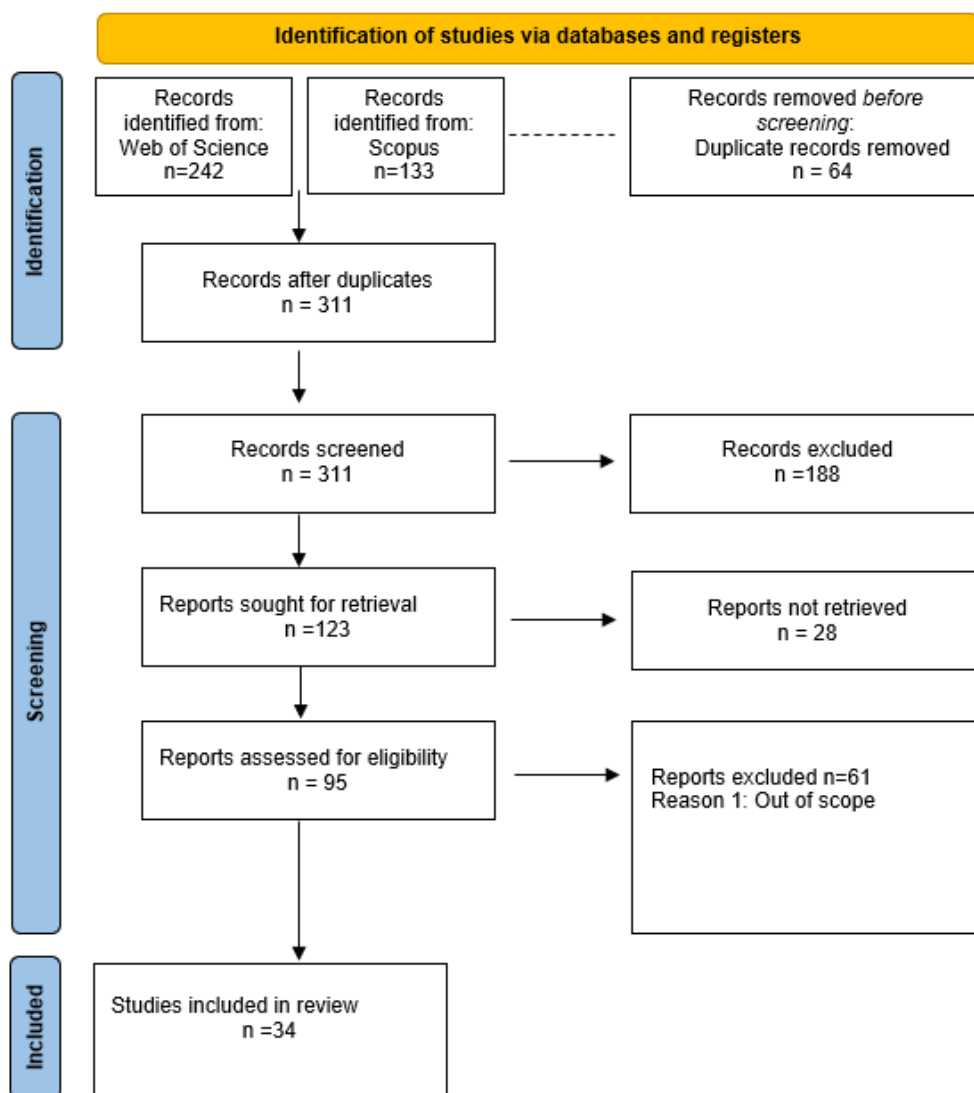


Figure 2. PRISMA 2020 Flow Diagram (Page et al., 2021) (<https://www.eshackathon.org/software/PRISMA2020.html>)

Data Classification Analysis

In order to systematically evaluate the literature review conducted on accommodation buildings, the studies were classified under specific analytical categories. In systematic literature analyses, examining the dataset in a multidimensional manner is recommended as a fundamental approach for making trends and research gaps within the field visible (Tranfield, Denyer & Smart, 2003, p. 218). Similarly, Kitchenham (2004, pp. 1–2, 19–20) emphasizes that structuring data across multiple dimensions and comparing them in tabular form in systematic reviews enables the identification of similarities and differences between studies and allows existing research gaps to be defined more clearly. Accordingly, the literature was systematically examined under three main headings: *thematic classification*, *methodological distribution*, and *accommodation types and spatial focus*.

This approach makes it possible to identify the periods in which research in the literature has intensified, the themes that have become prominent, and the extent to which research methods have diversified. Similarly, evaluating the frequency with which accommodation types and the spatial contexts they focus on are examined enables an understanding of which topics have received scholarly attention and which areas have been neglected in the literature.

The methodological suitability of this classification framework stems from its ability to provide an analytical workflow that is consistent with systematic review approaches recommended in the literature. The multidimensional data organization approach allows studies to be compared not only at the content level but also in terms of chronological, thematic, and methodological relationships (Xiao & Smith, 2006, pp. 490–494).

In this way, the structure, trends, and gaps within the literature can be identified comparatively, thereby strengthening the analytical depth of the research while simultaneously enhancing the methodological rigor of the review. The classification framework was developed through an iterative process combining prior literature with emergent patterns derived from the reviewed studies. In this context, Table 3 presents the three main classification categories used in the analysis, namely thematic classification, methodological distribution, and accommodation types and spatial focus, and outlines their analytical contributions to the literature, providing a clear framework for the systematic interpretation of the dataset.

Table 3. Data Classification Analysis

Category	Analysis Content	Purpose / Outcome
Thematic Classification	Identification of prominent themes in the literature	To identify the topics on which studies are concentrated
Methodological Distribution	Classification of qualitative, quantitative, and mixed methods used	To determine methodological diversity and identify gaps
Accommodation Types & Spatial Focus	Assessment of the extent to which accommodation types are studied and identification of spatial foci.	To identify which types are studied and which are neglected

FINDINGS

Conducted in accordance with the PRISMA guidelines, this study aims to examine a comprehensive body of literature on academic research in interior architecture related to accommodation units. As a result of systematic searches carried out in the Web of Science (WoS) and Scopus databases, approximately 375 studies were identified. As detailed in the data collection process and illustrated in the PRISMA 2020 flow diagram (Figure 2), a total of 34 studies meeting the predefined inclusion and exclusion criteria were selected for detailed analysis.

These studies were then categorized according to the predefined classification framework presented in Table 3, based on themes, methodologies, accommodation types, and spatial focus. Table 4 presents an overview of the reviewed studies by summarizing their thematic focus, methodological approach, accommodation type, and spatial context, thereby enabling a comparative reading of the findings.

Table 4. Data Classification

ARTICLE	THEME	METHOD	TYPES & SPATIAL FOCUS
Altan & Gürdallı, (2024)	AESTHETICS / ORNAMENTATION Conceptual and symbolic interpretation of ornament as a representational tool in contemporary hotel interiors.	QUALITATIVE literature synthesis + site observations + coding	INTERIOR SPACE SETTINGS Five-star casino hotels (lobby interiors)
Amireh et al., (2025)	SMART TECHNOLOGIES AI, VR, AR, IoT & BIM-based smart applications in tourism facility interior design; effects on sustainability, efficiency & guest experience	QUALITATIVE Systematic literature review (2010–2024) + thematic analysis of prior studies	INTERIOR SPACE SETTINGS Interior environments of tourism facilities (heritage sites, eco-resorts, urban hotels) enhanced through smart applications
Aslantamer & Iğın, (2024)	EFFICIENCY Space efficiency in tall hotel towers	QUALITATIVE Document-based case study of 31 tall hotel buildings	BUILDING-SCALE SETTINGS Tall hotel towers
Atmaca Çetin et al., (2019)	INFLUENCE The influence of İstanbul Hilton on mid-century hotel architecture in Turkey	QUALITATIVE Literature review + archival visuals + interviews	BUILDING-SCALE SETTINGS Analysis of whole hotel buildings & stylistic evolution
Baloglu & Pekcan, (2006)	PERCEPTION / EXPERIENCE Website design features and online marketing practices influencing user perceptions of upscale and luxury hotels.	QUANTITATIVE Website content analysis (45 criteria) followed by chi-square tests, MCA, and MANOVA (SPSS).	DIGITAL HOTEL SETTINGS Hotel websites as virtual interfaces representing 4- and 5-star resort and transient hotels
Bondarenko & He, (2021)	HERITAGE Design strategies transferring the image of the past in adaptive-reuse hotels	QUALITATIVE Literature, structural–functional & semantic analysis	INTERIOR SPACE SETTINGS Adaptive-reuse hotel interiors in historic buildings
Che Abdullah et al., (2023)	SUSTAINABILITY Sustainable interior design & hotel operational performance; hedonic consumption	QUALITATIVE semi-structured interviews; content analysis. (ATLAS.ti)	GREEN HOTEL Green hotels
Chen, (2015)	HERITAGE Ancient Chinese poetry as cultural inspiration for hotel interior atmosphere and spatial symbolism	QUALITATIVE Conceptual cultural analysis; rhetorical & symbolic spatial interpretation	INTERIOR SPACE SETTINGS Culture-inspired hotel interior spaces designed through poetic symbolism (lobby, circulation, guestrooms).
Cui et al., (2025)	HERITAGE / INTEGRATION Regenerative integration of Ru porcelain as intangible cultural heritage in hotel interior design	QUALITATIVE Literature review and case study analysis based on visual and textual observation	INTERIOR SPACE SETTINGS Theme hotel interiors incorporating cultural and craft-based design elements
Collina et al., (2017)	SHARING ECONOMY New hospitality models (Airbnb & peer-to-peer platforms) reshaping interior design expectations	QUALITATIVE Conceptual review + comparative analysis of 60+ sharing-hospitality platforms	CONCEPTUAL HOTEL Non-traditional accommodation frameworks (home-sharing, co-living, hybrid stays)
Domljan et al., (2025)	SUSTAINABILITY & HERITAGE Sustainable furniture design inspired by Istria’s rural cultural heritage (motifs, materials, ornaments)	QUALITATIVE Field observation, photography, curator interviews + creative design process (cyclical method)	INTERIOR SPACE SETTINGS Rural tourist accommodation (furniture concepts)
Farrou et al., (2016)	ENVIRONMENTAL PERFORMANCE Environmental performance-based envelope design for climate change mitigation in hotels	QUANTITATIVE Dynamic thermal simulations and climate-scenario-based energy performance analysis	BUILDING-SCALE SETTINGS Hotel buildings and envelope design strategies
Goodarzi et al., (2025)	SATISFACTION / PERFORMANCE Guest satisfaction shaped by LEED certification performance in hotels	QUANTITATIVE Statistical modelling and machine-learning-based evaluation	BUILDING-SCALE SETTINGS Whole-hotel sustainability certification level
Han & Lee, (2021)	PERCEPTION / EXPERIENCE Key lifestyle hotel attributes derived from user-created content (design, place, activities)	QUANTITATIVE Big data analysis, social network analysis, computer-vision image analysis	URBAN HOTEL Lifestyle hotels in Seoul shaped by geospatial + experiential patterns
Huang & Tsaih, (2023)	INTEGRATION Early involvement of interior design to reduce redesign effort	QUALITATIVE Interviews + content interpretation	BUILDING-SCALE SETTINGS Facility-level planning decisions
Kim & Kang (2022)	PERCEPTION / EXPERIENCE How environmental awareness and lobby artwork shape guests’ perceptions, preferences & loyalty	QUANTITATIVE Survey (330 participants) + SEM (AMOS), CFA, EFA	INTERIOR SPACE SETTINGS Urban hotel lobby interior design (artwork + environmental cues)
Kobeyev et al., (2021)	ENVIRONMENTAL PERFORMANCE Energy and environmental performance of hotel building envelopes, including passive and active strategies.	QUANTITATIVE Energy simulation (EnergyPlus), parametric analysis, performance optimization	BUILDING-SCALE SETTINGS Whole hotel building analyzed for climate-responsive and energy-efficient design



Kuprikov et al. (2023)	LAYOUT Interior layout requirements; passenger comfort, capsule design in long-haul aircraft	MIXED Theoretical & structural-parametric analysis; analytical modelling	CAPSULE HOTEL Capsule accommodation (aircraft cabin)
Kürüm Varolgüneş et al., (2021)	SATISFACTION / PERFORMANCE User needs translated into design criteria for thermal hotels	MIXED QFD + AHP (focus groups, pairwise comparisons, matrix analysis)	BUILDING-SCALE SETTINGS Thermal hotel building design
Lee & Lee, (2015)	PERCEPTION / EXPERIENCE Users' benefit-sought segments and expectations shaping hotel servicescape design	QUANTITATIVE Structured survey (n=202), factor analysis, cluster analysis (K-means), statistical evaluation	INTERIOR SPACE SETTINGS Hotel public & private facilities (guestrooms, lobbies, circulation spaces)
Mamić & Domljan, (2024)	MATERIAL / EXPERIENCE Users' visual perception and aesthetic preferences for wooden wall coverings	QUANTITATIVE Structured questionnaire + Likert-scale attribute evaluation + statistical analysis	INTERIOR SPACE SETTINGS Public interior spaces employing wood-based wall coverings.
Özsavaş Uluçay, (2025)	AESTHETICS / EXPERIENCE Color preferences and trend colors shaping visual and emotional experience in hotel guestroom interiors	QUALITATIVE Visual content analysis of award-winning hotel room designs using Adobe Color analytical tool	INTERIOR SPACE SETTINGS Hotel guestroom interiors (award-winning designs)
Park & Kang, (2022)	SUSTAINABILITY Eco-friendly artwork, green awareness & hotel satisfaction relationships examined through mediation	QUANTITATIVE Online survey (n=659), SEM, CFA, EFA	URBAN HOTEL Lobby-focused environmental artwork influencing guest attitudes
Qu et al., (2022)	ENVIRONMENTAL PERFORMANCE Acoustic performance of lightweight composite partitions in hotels	QUANTITATIVE Numerical simulation + experimental acoustic testing	INTERIOR SPACE SETTINGS Hotel interior (guestroom partition walls)
Rajapaksha, (2017)	PERCEPTION / EXPERIENCE Thermal comfort in hotel shared spaces	QUANTITATIVE Empirical field study (on-site measurements)	INTERIOR SPACE SETTINGS Coastal hotel
Rahaman et al., (2023)	HERITAGE Digital interpretation of a historic hotel through 360° panorama tours	QUALITATIVE Workflow-based digital analysis	INTERIOR SPACE SETTINGS Documentation of historic hotel interiors
Serrano-Baena et al., (2020)	SUSTAINABILITY Impact of BREEAM sustainability assessment on hotel design decisions	QUALITATIVE Interviews + document analysis of 7 hotel case studies	BUILDING-SCALE SETTINGS Certified hotel buildings (new-build & refurbishment)
Sirirat et al., (2024)	PERCEPTION / EXPERIENCE Architectural and service-related design factors shaping consumers' destination choices.	MIXED In-depth interviews (architects, designers, marketers + consumers) + thematic content analysis + quantitative chi-square tests	BUILDING-SCALE SETTINGS Three-star hotel design characteristics (aesthetics, comfort, safety, attractiveness) in Hua Hin, Thailand
Sloane, (2014)	AESTHETICS / EXPERIENCE Interior designers' practices for producing spatial atmospheres; material-visual strategies & cultural processes shaping hotel atmospheres	QUALITATIVE Ethnographic case study, semi-structured interviews, field observations, visual/document analysis	INTERIOR SPACE SETTINGS Hotel interior design practice; atmosphere-making processes in commercial interior spaces
Suess et al., (2024)	PERCEPTION / EXPERIENCE Biophilic design attributes shaping restorative guest experiences (relaxation, energy, mental clarity)	QUANTITATIVE Conjoint analysis with manipulated biophilic hotel scenarios	INTERIOR SPACE SETTINGS Urban hotel public & private spaces with biophilic elements
Wang, (2024)	PERCEPTION / EXPERIENCE User experience and sentiment formation in hotel rooms enhanced by virtual reality (VR) content, interactivity, and ambience	QUANTITATIVE Content and sentiment analyses with machine-learning models (BERT, autoencoders).	INTERIOR SPACE SETTINGS Hotel guestroom environments augmented with virtual reality technologies
Wang & Pan, (2024)	ENVIRONMENTAL PERFORMANCE Environmental quality assessment in quarantine hotel rooms	MIXED In-situ measurement + statistical analysis (correlation & regression)	INTERIOR SPACE SETTINGS Hotel guestroom (used for quarantine)
Xu et al. (2022a)	AESTHETICS / EXPERIENCE Interior color design & emotional experience	QUANTITATIVE VR experimental method	INTERIOR SPACE SETTINGS Hotel guest room
Xu et al., (2022b)	PERCEPTION / EXPERIENCE Effect of hotel decoration styles on IEQ perception	MIXED Text mining + questionnaire + SPSS (PCA, ANOVA)	INTERIOR SPACE SETTINGS Urban hotel – standard rooms (3 styles)

* The table is organized based on the alphabetical order of the authors' names.

Drawing on the thematic and methodological framework established above, the findings derived from the categorized studies presented in Table 4 are discussed in the following section.

Thematic Classification Findings

An examination of the thematic distribution reveals that the Perception / Experience theme is by far the most dominant in the literature (23.5%). This is followed by Aesthetics / Experience (14.7%) and Environmental Performance (11.8%), while Heritage and Sustainability exhibit a moderate level of representation (8.8% each). In contrast, several themes are represented by single studies only (2.9%), indicating that, alongside clear thematic concentrations, the literature also contains fragmented and limited research areas. The graphical distribution of the thematic classifications is presented in Figure 3.

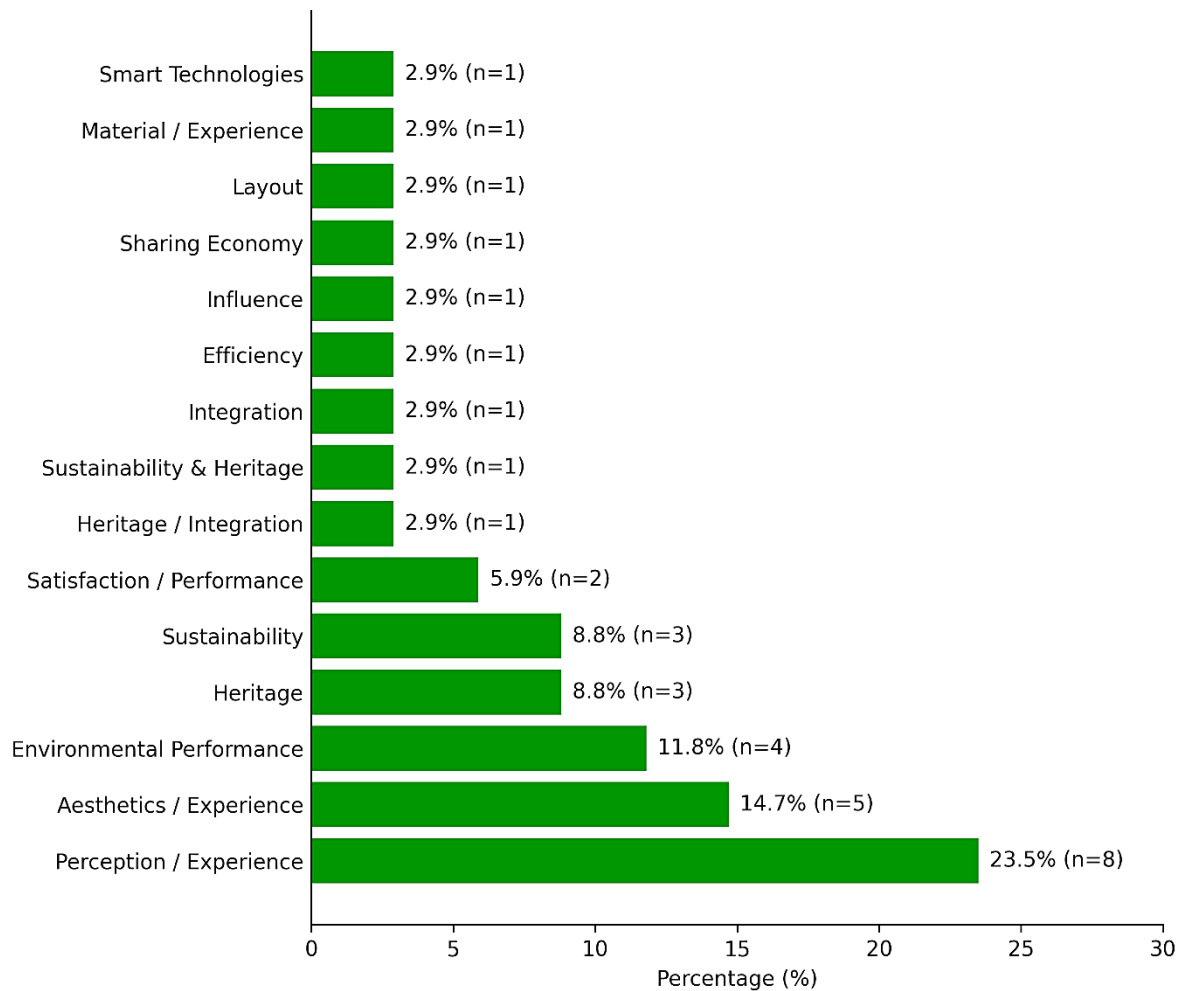


Figure 3. Thematic Distribution Of The Reviewed Studies (% and n)

Methodological Distribution Findings

An evaluation of the methodological distribution of the reviewed studies indicates that half of the research adopts quantitative approaches (50%), followed by qualitative methods (35.3%) and mixed-method approaches (14.7%). These findings demonstrate that single-method studies, whether quantitative or qualitative, are predominant in the literature, while mixed-method approaches are adopted to a relatively limited extent. Details of the methodological distribution are presented in Figure 4.

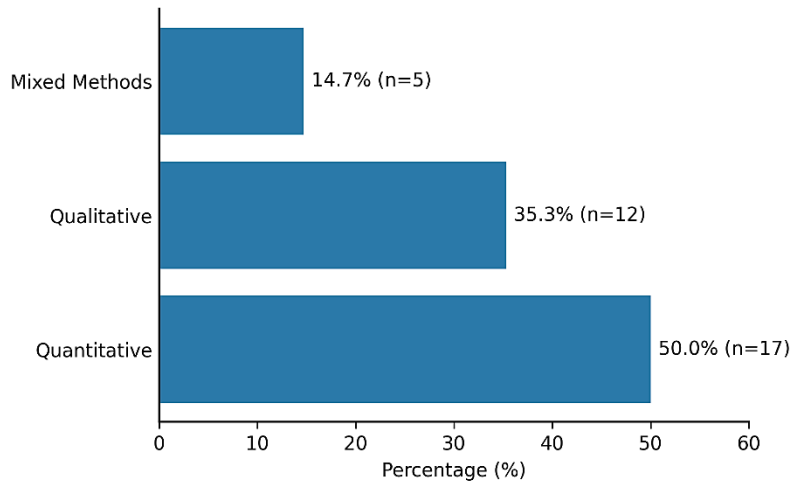


Figure 4. Methodological Distribution of The Reviewed Studies (% and n)

Accommodation Types & Spatial Focus Finding

An examination of the distribution according to accommodation types and spatial focus indicates that the majority of the reviewed studies concentrate on hotel interior spaces (58.8%). This is followed by studies addressing hotel buildings at the building scale (20.6%). In contrast, alternative accommodation types such as urban hotels, green hotels, digital, conceptual, and capsule hotels are represented at a limited level in the literature. These findings demonstrate that hotel buildings constitute a dominant research focus in the accommodation literature, whereas alternative and small-scale accommodation types remain underrepresented.

Furthermore, studies within the field of interior architecture predominantly focus on room typologies within accommodation units, while public interior spaces such as lobbies, restaurants, reception areas, and shared spaces appear to be relatively neglected. This situation suggests that the spatial diversity of accommodation interiors has not been addressed holistically in the literature and points to a significant research gap for future studies. Details regarding accommodation types are presented in Figure 5, while the spatial focus distribution of the reviewed studies is illustrated in Figure 6.

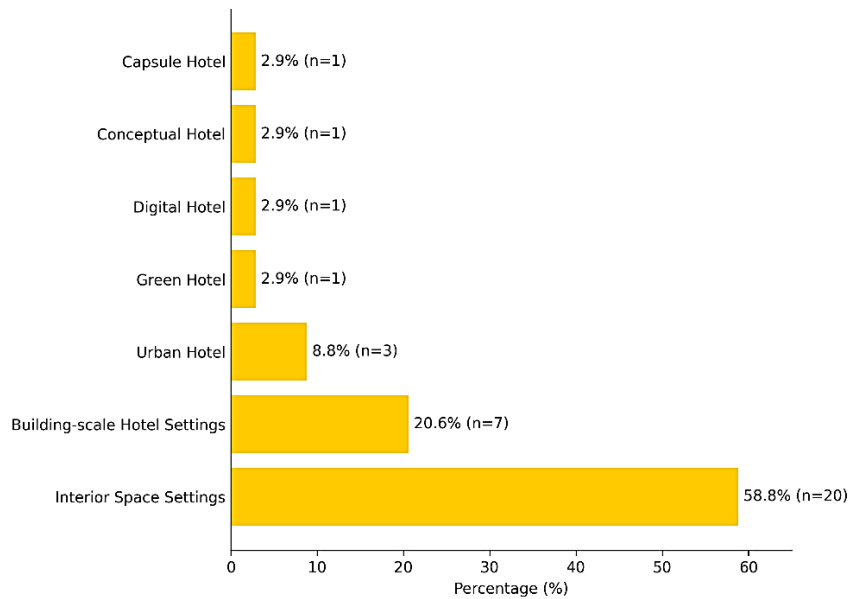


Figure 5. Distribution of Accommodation Types In The Reviewed Studies (% and n).

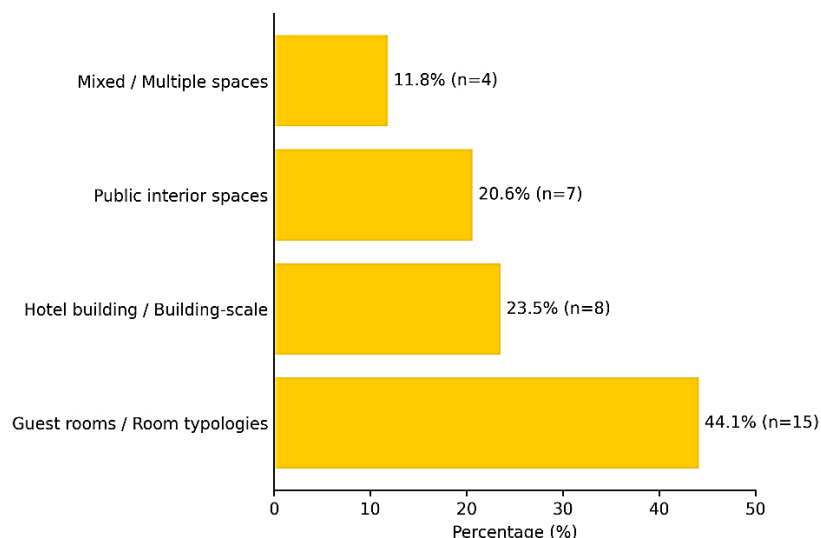


Figure 6. Distribution of Spatial Focus In The Reviewed Studies (% and n).

Taken together, the findings reveal distinct thematic, methodological, and spatial patterns within the literature, alongside notable gaps that warrant further scholarly attention. These patterns form the basis for the conclusions presented in the following section.

CONCLUSION

In this section, the findings related to the three main research questions identified within the scope of the study are evaluated in a holistic manner. Based on the data obtained from the systematic literature review, the current state of the interior architectural design literature on accommodation units, its recurring themes, and methodological trends are identified. In addition, the topics that have been extensively examined and those that remain relatively underexplored in the literature are systematically explained. In this way, the study makes the general orientations of the literature visible while providing a structured conclusion framework that addresses each research question.

RQ1: What is the current state of academic studies on interior architectural design in accommodation units?

The systematic literature review conducted within the scope of this study reveals that academic research on interior architectural design in accommodation units tends to concentrate around specific themes, spatial scales, and methodological approaches. The literature predominantly focuses on hotel interior spaces, particularly room-scale environments, while studies addressing hotel buildings at the building scale and alternative accommodation types remain relatively limited. From a methodological perspective, single-method research designs, both quantitative and qualitative, prevail in the literature, whereas mixed-method approaches, which have the potential to integrate different types of data in a holistic manner, are adopted to a lesser extent. These findings indicate that although the literature on interior architectural design in accommodation units is developing, it continues to be shaped around specific focal areas and established methodological traditions.

RQ2: What are the recurring interior architectural design themes, approaches, and trends in the literature on accommodation units?

The results of the thematic distribution indicate that perception- and experience-oriented approaches are particularly prominent in the literature. The dominance of the Perception / Experience theme reveals that user experience, sensory perception, and spatial interaction constitute the primary research axes in interior architectural design studies. The subsequent prominence of the Aesthetics / Experience and Environmental Performance themes demonstrates that experience-oriented approaches are addressed together with aesthetic and performance-related dimensions. The moderate representation of the

Heritage and Sustainability themes suggests that cultural values and environmental concerns are increasingly gaining attention in the literature, although they have not yet emerged as dominant research orientations. Overall, it can be stated that user-centered, experience-based, and performance-oriented approaches represent recurring and defining trends within the literature.

RQ3: Which topics have been extensively examined in interior architectural design research, and which have not been sufficiently addressed?

The findings indicate that the literature on interior architectural design in accommodation units predominantly concentrates on specific topics such as hotel rooms, user perception, experience, and aesthetic considerations. In contrast, public interior spaces including lobbies, restaurants, reception areas, and shared spaces, as well as alternative accommodation types such as urban hotels, green hotels, digital, conceptual, and capsule hotels, are addressed to a limited extent in the literature. From a thematic perspective, the fact that many topics are represented by single studies points to the presence of fragmented and insufficiently developed research areas within the field. This situation highlights important research opportunities for future studies, particularly in terms of increasing thematic diversity and developing more comprehensive approaches that integrate spatial, cultural, and technological dimensions.

Taken together, these findings indicate that interior architectural research in accommodation contexts has developed depth in experiential and aesthetic domains, yet remains comparatively narrow in spatial scale, typological diversity, and methodological integration. In particular, public interior spaces and alternative accommodation models remain underrepresented, limiting the analytical scope of the field.

The limited adoption of mixed-method approaches further suggests that the multidimensional character of interior architectural design has not yet been fully explored through integrative research models.

Overall, the findings underscore the need for greater thematic diversification and methodological integration to advance scholarship on interior architectural design in contemporary accommodation environments. Within this broader context of identified gaps and structural patterns, the role of the present review becomes clearer. Beyond mapping research tendencies, the study contributes to the consolidation of interior architecture as an analytically autonomous discipline within accommodation research. By systematically identifying thematic concentrations, methodological patterns, and underexplored spatial dimensions, the review reinforces interior spatial experience and user-space interaction as core analytical categories. In doing so, it moves beyond descriptive aggregation and supports the development of a theoretically grounded and methodologically articulated framework specific to interior architectural inquiry, while simultaneously encouraging interdisciplinary dialogue without diluting disciplinary distinctiveness.

This study offers a structured analytical overview of interior architectural research in accommodation contexts by mapping thematic tendencies, methodological orientations, and spatial focuses. Rather than merely identifying dominant patterns, the research positions these findings within a broader disciplinary discussion concerning the scope and theoretical coherence of interior architecture as a field.

By revealing concentrations around specific experiential themes and spatial scales, the study highlights the necessity of expanding analytical perspectives beyond established focal areas. The findings underscore the importance of increasing methodological plurality and encouraging integrative research models capable of addressing the multidimensional nature of interior architectural design.

In this respect, the study contributes not only by identifying research gaps but also by proposing a conceptual and methodological orientation for future scholarship. Establishing a more critically engaged and theoretically articulated body of literature will support the consolidation of interior architecture as a distinct and analytically robust discipline within accommodation studies.

This study has several limitations. First, in order to clearly define the scope of the review, books, book chapters, conference proceedings, and grey literature were excluded from the analysis. Future research may expand the scope by including these types of sources, thereby enhancing the theoretical diversity and depth of the literature.

Second, the review was limited to studies published in English, which constitutes a language-based limitation. Including research published in other languages may increase the visibility of local knowledge production and provide a more inclusive academic perspective.

Third, the data collection process was restricted to the Web of Science (WoS) and Scopus databases. As a result, some relevant studies indexed in other platforms may have been excluded. Future studies could incorporate additional databases such as EBSCO, ProQuest, and similar sources to broaden the coverage of the literature.

Finally, the literature review was confined to a set of predefined keywords. While this focused approach allowed for in-depth analysis, it may have led to the omission of certain interdisciplinary themes related to accommodation design. Future research could incorporate topics such as accessibility, spatial experience, user behavior, and technology-driven approaches to facilitate a more holistic understanding of the field.

REFERENCES

- Al Khatib, I., Samara, F., & Ndiaye, M. (2024). A systematic review of the impact of therapeutical biophilic design on health and wellbeing of patients and care providers in healthcare services settings. *Frontiers in Built Environment*, 10, 1467692. <https://doi.org/10.3389/fbuil.2024.1467692>
- Altan, H., & Gürdallı, H. (2024). Conceptual approaches in contemporary hotel interiors in Northern Cyprus: Ornamentation and representation. *Buildings*, 14(3), 804. <https://doi.org/10.3390/buildings14030804>
- Amireh, M., Arabasy, M., & Ghoneim, R. S. (2025). The effect of using smart applications in the interior design of tourism facilities: A review. *Civil Engineering and Architecture*, 13(2), 931–948. <https://doi.org/10.13189/cea.2025.130213>
- Aslantamer, Ö. N., & İlgin, H. E. (2024). Space efficiency in tall hotel towers. *Buildings*, 14(7), 2051. <https://doi.org/10.3390/buildings14072051>
- Atmaca Çetin, H., Tuna Ultav, Z., & Uz, F. (2019). Reflections of the İstanbul Hilton Hotel on mid-century hotel buildings in Turkey. *Art-Sanat*, 12, 57–88. <https://doi.org/10.26650/artsanat.2019.12.0016>
- Baloglu, S., & Pekcan, Y. A. (2006). The website design and Internet site marketing practices of upscale and luxury hotels in Turkey. *Tourism Management*, 27, 171–176. <https://doi.org/10.1016/j.tourman.2004.07.003>
- Bondarenko, I., & He, X. (2021). Hotels in objects of adaptive architecture design as a means of transferring the image of the past. *Architecture, Civil Engineering, Environment*, 5–14. <https://doi.org/10.21307/ACEE-2021-001>
- Che Abdullah, S. N., Khalil, N., Haron, S. N., Hamid, M. Y., & Yan, Y. (2023). Unveiling the Impact of Sustainable Interior Design Criteria on Hotel's Operational Performance Effectiveness and User's Hedonic Consumption. *International Journal of Sustainable Construction Engineering and Technology*, 14(3), 154–165. <https://doi.org/10.30880/ijscet.2023.14.03.013>
- Chen, Y. (2015). Application of China ancient poetry culture art in the interior design in the construction of tourism. *The Open Cybernetics & Systemics Journal*, 9, 2904–2910. <https://doi.org/10.2174/1874110X01509012904>
- Collina, L., Galluzzo, L., Gerosa, G., Bellè, M., Maiorino, M. L. (2017). Sharing economy for tourism and hospitality: New ways of living and new trends in interior design. *The Design Journal*, 20(sup1), S3448–S3463. <https://doi.org/10.1080/14606925.2017.1352848>
- Cui, G., Mohd Taib, M. Z., & Abd Jamil, A. (2025). Analysis of the regenerative design of Ru porcelain in hotels. *Al-Qadisiyah Journal for Engineering Sciences*, 18(3), 307–311. <https://doi.org/10.30772/qjes.2025.156313.1468>
- Deniz, Z. B., & Cavka, B. T. (2024). A systematic literature review on biophilic hotel design [Biyofilik otel tasarımı üzerine sistematik bir literatür incelemesi]. *Kent Akademisi: Kent Kültürü ve Yönetimi*, 17(5), 2041–2056. <https://doi.org/10.35674/kent.1453502>
- Domljan, D., Lukež, N., & Vlaović, Z. (2025). Sustainable furniture design for rural tourist accommodation inspired by the heritage of Istria. *Sustainability*, 17(1415). <https://doi.org/10.3390/su17041415>
- Farrou, I., Kolokotroni, M., & Santamouris, M. (2016). Building envelope design for climate change mitigation: A case study of hotels in Greece. *International Journal of Sustainable Energy*, 35(10), 944–967. <https://doi.org/10.1080/14786451.2014.966711>
- Fleming, P. S., Seehra, J., Polychronopoulou, A., Fedorowicz, Z., & Pandis, N. (2013). A PRISMA assessment of the reporting quality of systematic reviews in orthodontics. *The Angle orthodontist*, 83(1), 158–163. <https://doi.org/10.2319/032612-251.1>
- Goodarzi, H., Urooj, R., Islam, T., & Ali, A. (2025). Beyond the green label: How LEED certification levels shape guest satisfaction in USA hotels. *Buildings*, 15(2108), 1–18. <https://doi.org/10.3390/buildings15122108>
- Gonçalves, G., Sousa, C., Fernandes, M. J., Almeida, N., & Sousa, A. (2023). Restorative effects of biophilic workplace and nature exposure during working time: A systematic review. *International Journal of Environmental Research and Public Health*, 20, 6986. <https://doi.org/10.3390/ijerph20216986>
- Han, Y., & Lee, H. (2021). Lifestyle experiences: Exploring key attributes of lifestyle hotels using

- Instagram user-created contents in South Korea. *Sustainability*, 13, 2591.
<https://doi.org/10.3390/su13052591>
- Heide, M., Laerdal, K., & Grønhaug, K. (2007). The design and management of ambiance— Implications for hotel architecture and service. *Tourism Management*, 28(5), 1315–1325.
- Huang, J. & Tsaih, L. (2023) Exploring potential impacts for early involvement of interior design in the early land development stage - Studying Taiwan Cosmos Group’s hotel development, *Journal of Asian Architecture and Building Engineering*, 22:2, 452- 460
DOI: 10.1080/13467581.2022.2046588
- Jain, V., Wirtz, J., Salunke, P., Nunkoo, R., & Sharma, A. (2023). Luxury hospitality: A systematic literature review and research agenda. *International Journal of Hospitality Management*, 115, 103597. <https://doi.org/10.1016/j.ijhm.2023.103597>
- Kim, J., & Kang, E. (2022). An empirical study of how both environmental awareness and interest in artwork can be incorporated into the interior design of urban hotels. *Sustainability*, 14(1005), 1–22. <https://doi.org/10.3390/su14021005>
- Kitchenham, B. (2004). *Procedures for performing systematic reviews*. Keele University.
- Kobeyev, S., Tokbolat, S., & Durdyev, S. (2021). Design and energy performance analysis of a hotel building in a hot and dry climate: A case study. *Energies*, 14, 5502.
<https://doi.org/10.3390/en14175502>
- Kontić, A. (2018). The role of perceptions of hotel interior design in forming customer satisfaction (Bachelor’s thesis). College of Hotel Management, Belgrade.
<https://www.vhs.edu.rs/dokumenti/HL/068.pdf>
- Kuprikov, M. Y., Orekhov, A. A., Shulga, Y. D., & Min, Y. N. (2023). Specifics of the requirements for the interior layout of long-haul aircraft. *Journal of Applied Research and Technology*, 21(2), 145–153. <https://doi.org/10.1016/j.jart.2017.02.005>
- Kürüm Varolgüneş, F., Canan, F., del Río-Rama, M. de la C., & Oliveira, C. (2021). Design of a thermal hotel based on AHP-QFD methodology. *Water*, 13, 2109.
<https://doi.org/10.3390/w13152109>
- Lawson, B. (2001). *The Language of Space*. Architectural Press.
- Lee, S. H., & Lee, H. (2015). The design of servicescape based on benefit sought in hotel facilities: A survey study of hotel consumers in Seoul. *Journal of Asian Architecture and Building Engineering*, 14(3), 633–640. <https://doi.org/10.3130/jaabe.14.633>
- Lefosse, D., van Timmeren, A., & Ratti, C. (2023). Biophilia Upscaling: A systematic literature review based on a three metric approach. *Sustainability*, 15(22), 15702.
<https://doi.org/10.3390/su152215702>
- Liberati, A., Altman, D. G., Tetzlaff, J., Mulrow, C., Gøtzsche, P. C., Ioannidis, J. P. A., Clarke, M., Devereaux, P. J., Kleijnen, J., & Moher, D. (2009). The PRISMA statement for reporting systematic reviews and meta analyses of studies that evaluate health care interventions: Explanation and elaboration. *PLoS Medicine*, 6(7), e1000100.
<https://doi.org/10.1371/journal.pmed.1000100>
- Mamić, D., & Domljan, D. (2024). User preferences on the application of wooden wall coverings in interiors made of oak veneer residue. *Buildings*, 14, 1795.
<https://doi.org/10.3390/buildings14061795>
- Meinck, F., Neelakantan, L., Jochim, J., & Boyes, M. (2022). Measuring violence against children: A COSMIN systematic review of the psychometric properties of child and adolescent self-report measures. *Trauma, Violence, & Abuse*. <https://doi.org/10.1177/15248380221082152>
- Moher, D., Liberati, A., Tetzlaff, J. ve Altman, D. G. (2009). Preferred reporting items for systematic reviews and meta-analyses: The PRISMA statement. *PLoS Medicine*, 6(7), e1000097.
<https://doi.org/10.1371/journal.pmed.1000097>
- Nanu, L., Rahman, I., Ali, F., & Martin, D. S. (2024). Enhancing the hospitality experience: A systematic review of 22 years of physical environment research. *International Journal of Hospitality Management*, 119, 103692. <https://doi.org/10.1016/j.ijhm.2024.103692>
- Özsavaş Uluçay, N. (2025). Determination of color preferences and trend colors in hotel room interior design. *Journal of Architectural/Planning Research and Studies (JARS)*, 22(1).
<https://doi.org/10.56261/jars.v22.268719>
- Pallasmaa, J. (2005). *The eyes of the skin: Architecture and the senses*. John Wiley & Sons.

- Park, J.-E., & Kang, E. (2022). The mediating role of eco-friendly artwork for urban hotels to attract environmental educated consumers. *Sustainability*, 14,3784. <https://doi.org/10.3390/su14073784>
- Page, M. J., McKenzie, J. E., Bossuyt, P. M., Boutron, I., Hoffmann, T. C., Mulrow, C. D., et al. (2021). The PRISMA 2020 statement: An updated guideline for reporting systematic reviews. *BMJ*, 372, n71. <https://doi.org/10.1136/bmj.n71>
- Qu, T., Wang, B., & Min, H. (2022). Lightweight composite partitions with high sound insulation in hotel interior spaces: Design and application. *Buildings*, 12(12), Article 2184. <https://doi.org/10.3390/buildings12122184>
- Rahaman, H., Champion, E., & McMeekin, D. (2023). Outside inn: Exploring the heritage of a historic hotel through 360-panorama tours. *Heritage*, 6, 4380–4410. <https://doi.org/10.3390/heritage6050232>
- Rajapaksha, I. (2017). Effect of spatial ambience on thermal adaptation in tropics: Case of free-running shared spaces in coastal hotels of Sri Lanka. *Procedia Engineering*, 180, 975–985. <https://doi.org/10.1016/j.proeng.2017.04.247>
- Rashdan, W., & Ashour, A. F. (2024). Exploring sustainability in interior design: A comprehensive systematic review. *Buildings*, 14(8), 2303. <https://doi.org/10.3390/buildings14082303>
- Rogers, R. (2001). *Cities for a Small Planet*. Westview Press.
- Serrano-Baena, M. M., Triviño-Tarradas, P., Ruiz-Díaz, C., & Hidalgo Fernández, R. E. (2020). Implications of BREEAM sustainability assessment on the design of hotels. *Sustainability*, 12, 6550. <https://doi.org/10.3390/su12166550>
- Sideri, S., Papageorgiou, S. N., & Eliades, T. (2018). Registration in the International Prospective Register of Systematic Reviews (PROSPERO) of systematic review protocols was associated with increased review quality. *Journal of Clinical Epidemiology*, 100, 103–110. <https://doi.org/10.1016/j.jclinepi.2018.01.003>
- Sirirat, S., Thampanichwat, C., Pongsermpol, C., & Moorapun, C. (2024). The hotel architectural design factors influencing consumer destinations: A case study of three-star hotels in Hua Hin, Thailand. *Buildings*, 14, 2428. <https://doi.org/10.3390/buildings14082428>
- Sloane, M. (2014). Tuning the space: Investigating the making of atmospheres through interior design practices. *Interiors*, 5(3), 297–314. <https://doi.org/10.2752/204191114X14126916211184>
- Sop, S.A. (2020). A Systematic Literature Review on Hotel Design, *Turizm Akademik Dergisi*, 7 (2), 297-310.
- Suess, C., Legendre, T. S., & Hanks, L. (2024). Biophilic urban hotel design and restorative experiencescapes. *Journal of Hospitality & Tourism Research*, 48(8), 1572–1593. <https://doi.org/10.1177/10963480241244720>
- Tranfield, D., Denyer, D., & Smart, P. (2003). Towards a methodology for developing evidence-informed management knowledge. *British Journal of Management*, 14(3), 207–222.
- Wang, H., & Pan, W. (2024). Multi-domain environmental quality of indoor mixed-use open spaces and insights into healthy living—A quarantine hotel case study. *Buildings*, 14(11), 3443. <https://doi.org/10.3390/buildings14113443>
- Wang, J. (2024). Design of hotel room experience based on virtual reality technology. *Journal of Electrical Systems*, 20(1), 206–218.
- Xiao, H., & Smith, S. (2006). The making of tourism research: Insights from a social sciences journal. *Annals of Tourism Research*, 33(2), 490–507.
- Xu, J., Li, M., Cao, K., Zhou, F., Lv, B., Lu, Z., Cui, Z., & Zhang, K. (2022a). A VR experimental study on the influence of Chinese hotel interior color design on customers' emotional experience. *Buildings*, 12(7), 984. <https://doi.org/10.3390/buildings12070984>
- Xu, J., Li, M., Huang, D., Wei, Y., & Zhong, S. (2022b). A Comparative Study on the Influence of Different Decoration Styles on Subjective Evaluation of Hotel Indoor Environment, 12(11), 1777. <https://doi.org/10.3390/buildings12111777>
- Yildirim, M., Gocer, O., Globa, A., & Brambilla, A. (2023). Investigating restorative effects of biophilic design in workplaces: A systematic review. *Intelligent Buildings International*, 15(5), 205–247. <https://doi.org/10.1080/17508975.2024.2306273>
- Zumthor, P. (2006). *Atmospheres: Architectural environments, surrounding objects*. Birkhäuser.

